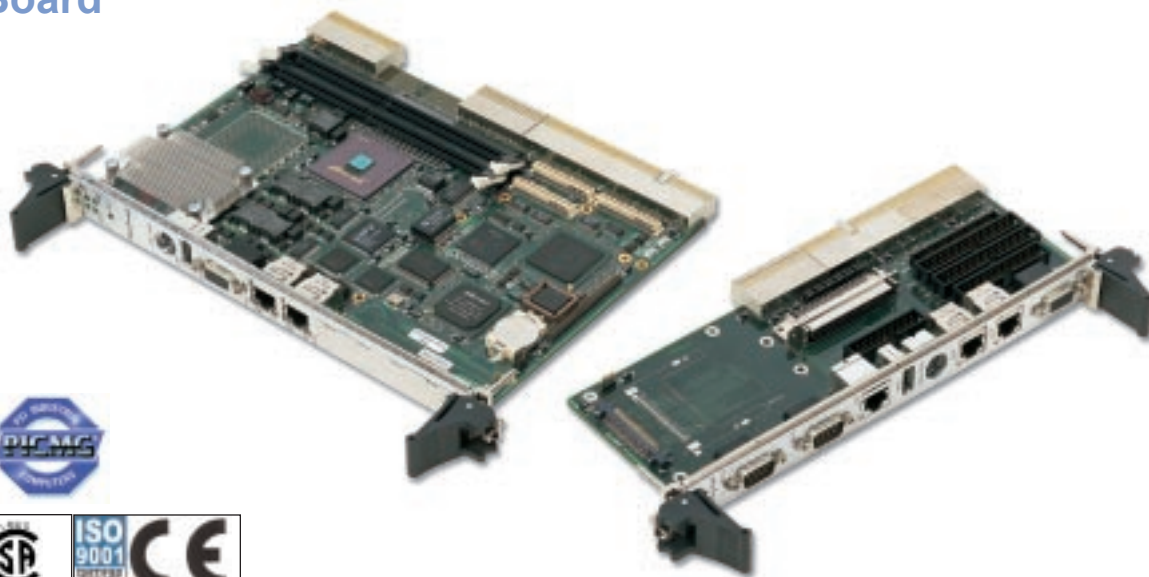


IBC 2802

Dual Low Power Pentium® III Peripheral Master or Satellite CPU Board



PICMG 2.16 Compliant

Ordering Information

IBC 2802-850

Single Pentium III-M, 850 MHz w/dual 10/100 Ethernet, Ultra 160 SCSI and SVGA

IBC 2802-D850

Dual Pentium III-M, 850 MHz w/dual 10/100 Ethernet, Ultra 160 SCSI and SVGA

IBC 2802-933

Single Pentium III-M, 933 MHz w/dual 10/100 Ethernet, Ultra 160 SCSI and SVGA

IBC 2802-D933

Dual Pentium III-M, 933 MHz w/dual 10/100 Ethernet, Ultra 160 SCSI and SVGA

Memory Options

DSDM-128MB	128MB DDR SDRAM
DSDM-256MB	256MB DDR SDRAM
DSDM-512MB	512MB DDR SDRAM
DSDM-1GB	1 GB DDR SDRAM
DSDM-2GB	Call

IBC 2703-RIO

Rear I/O transition module for 280X with 1.8" hard drive socket

Hard Drive Options

HDD-5GB	5GB 1.8" IDE HDD
HDD-10GB	10GB 1.8" IDE HDD
HDD-20GB	20GB 1.8" IDE HDD

IBC 16010 - Storage Mezzanine Board for 280x with 1.8" hard drive socket and CompactFlash socket

Hard Drive Options

HDD-5GB	5GB 1.8" IDE HDD
HDD-10GB	10GB 1.8" IDE HDD
HDD-20GB	20GB 1.8" IDE HDD

CompactFlash Options

CF-32MB	32MB CompactFlash
CF-64MB	64MB CompactFlash
CF-128MB	128MB CompactFlash
CF-256MB	256MB CompactFlash
MD-1GB	1GB Microdrive

Specifications

Microprocessor

- Single or dual Low Power Pentium III Processors at up to 933 MHz
- Supports possible future Intel® speed upgrades

Cache

- 512 Kbytes Integrated Full speed L2 cache

Chipset

- Micron® Copperhead™/Coppertail™

Dynamic RAM

- Up to 2 GB of Double Data Rate (DDR) synchronous DRAM at 266 MHz

32-bit PCI Mezzanine Card (PMC) Expansion

- 32-bit/33 MHz PMC with 2703 rear-panel I/O

Optional Storage Mezzanine Board

- 1.8" IDE HDD up to 20GB
- CompactFlash up to 256MB or 1GB Microdrive

BIOS

- Award BIOS
- Customized BIOS available

Watchdog Timer

- Software controlled with reset capability

Ethernet Interfaces

- Dual 10/100BaseTx Ethernet, Intel 82559ER
- Dual 1000BaseT Ethernet, Intel 82546EB
- PICMG® 2.16 compatible pin-outs w/ 2703 RIO

Video Interface

- 69030 PCI Video with 4MB Memory
- 1280 x 1024 x True Color non-interlaced

Enhanced IDE (Dual)

- Dual IDE Interface up to 4 drives
- ATA 100 with synchronous transfers up to 100MB/s

System Monitoring

- On-board monitoring of voltages, temperatures
- Optional PICMG 2.9 Compliant BMC/PM
- Optional SNMP Agent Software Available

USB

- One PC compatible USB port
- Additional USB port on 2703 RIO rear panel

Standard I/O

- Floppy drive interface, up to 2 drives
- Dual 16C550 Serial Ports
- Bi-directional Parallel Port with EPP and ECP
- PS/2 Mouse Port
- PS/2 Keyboard Interface

Mechanicals

- 1-Slot (4HP) x 6U **CompactPCI®** Compliant
- **CompactPCI®** Compliant 2703 Rear I/O Board

Operating Environment

- Temperature: 0° - +50° C
- Storage: -40° - +85° C

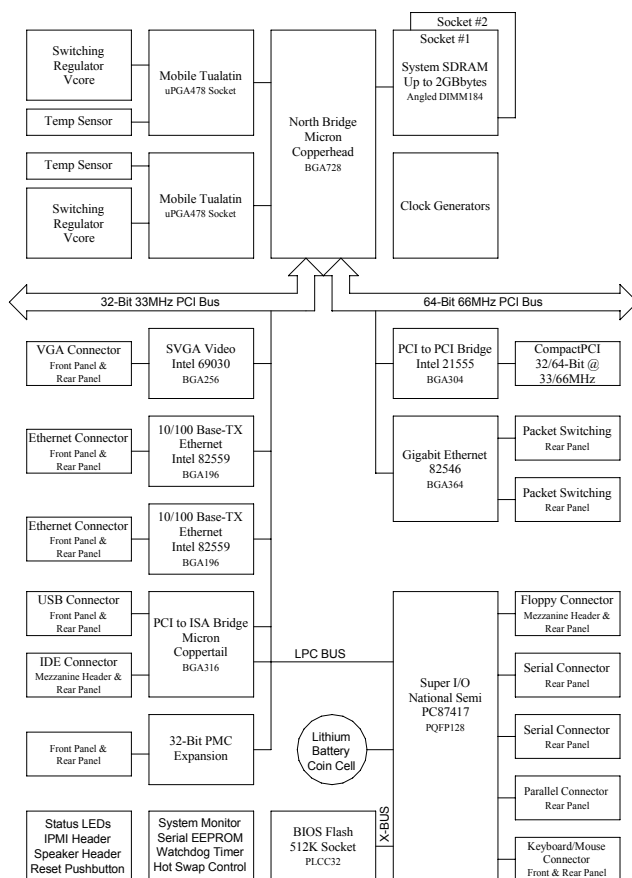
Power Requirements (Typical)

- 3.5A (single CPU) or 5A (dual CPU) at +5.0 volts
- 2A (single CPU) or 3A (dual CPU) at +3.3 Volts
- 24Watts (single CPU) or 34 Watts (dual CPU)

IBC 2802

Dual Low Power Pentium® III Peripheral Master or Satellite CPU Board

The IBC 2802 is fully CPSB PICMG 2.16 compatible to support Gigabit Ethernet switched fabric backplane architectures. With the additional compatibility of PICMG 2.1 full hot-swap and PICMG 2.9 full IPMI system management, the IBC 2802 is a powerful, scalable, open architecture building block in high-reliability and high-availability CompactPCI-based server blade systems from I-Bus. The IBC 2802 supports Dual Low Power Intel Pentium III processors, operating at up to and beyond 933MHz. Program and data storage needs are met with support for up to 2 Gbytes of DDR SDRAM as well as 256+ Mbytes of CompactFlash or a 1 Gbyte IBM Microdrive, and an IDE hard drive up to 20GB on board. Additional IDE hard drive may be installed on the IBC 2703 rear I/O transition module to provide total disk storage capacity up to 40 GB per blade. Additional features include dual 1000BaseT Ethernet, dual 10/100 BaseTX Ethernet, 32-bit PMC expansion with rear I/O and on-board AGP Video. Also supported is the full set of standard PC peripherals including Ultra ATA/100, 1.44 Mbyte floppy, USB, RS-232 serial ports, parallel port, mouse and keyboard.



Peripheral Map

Peripheral	Front Panel	Rear Panel	Comment
SVGA Video	√	√	Jumper selectable
Ethernet 0	√	√	Jumper selectable
Ethernet 1	√	√	Jumper selectable
PMC	√	√	On rear I/O board as internal 68-pin connector
Gigabit Ethernet		√	
Ultra IDE 0		√	Also available on-board via 50-pin header
Ultra IDE 1		√	On rear I/O board as internal header connector
Floppy		√	Also available on-board via 50-pin header
USB 0	√		
USB 1		√	
Serial Port 0		√	
Serial Port 1		√	
Printer Port		√	On rear I/O board as internal header connector
Mouse	√	√	Shared with keyboard on single PS/2 connector
Keyboard	√	√	Shared with mouse on single PS/2 connector

For Further Information



Worldwide Headquarters

I-Bus Corporation
 3350 Scott Blvd, Building 54
 Santa Clara, CA 95054
 United States
 Phone : +1 (408) 450-7880
 Fax : +1 (408) 450-7881
Toll Free: 877-777-IBUS
 Email: contact.us@ibus.com

European Headquarters

I-Bus UK Ltd
 Unit 6, Chichester Business Park
 City Fields Way, Tangmere
 West Sussex, PO20 2LB, UK
 Tel: +44 (0) 1243 756300
 Fax: +44 (0) 1243 756301
 Email: contact.uk@ibus.com

France, Italy

I-Bus France
 B.P 45 Valbonne
 06901 Sophia Antipolis CEDEX
 France
 Tel: +33 (0) 493 004 360
 Fax: +33 (0) 493 004 369
 Email: contact.fr@ibus.com