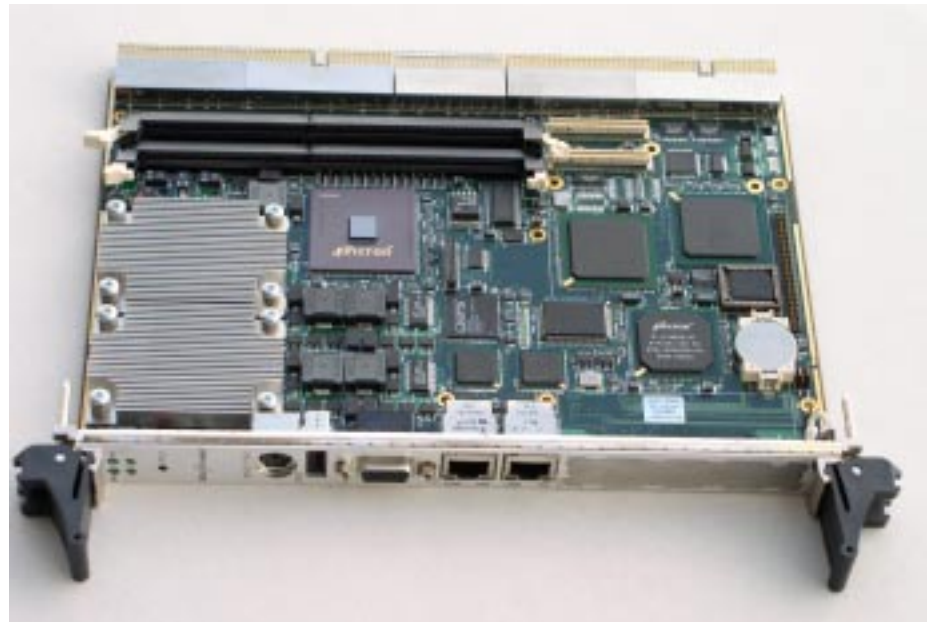


## IBC 2801

### Dual Low Power Pentium® III System Master CPU Board



#### Ordering Information

##### IBC 2801-850

Single Pentium III-M, 850 MHz w/dual 10/100 Ethernet, Ultra 160 SCSI and SVGA

##### IBC 2801-D850

Dual Pentium III-M, 850 MHz w/dual 10/100 Ethernet, Ultra 160 SCSI and SVGA

##### IBC 2801-933

Single Pentium III-M, 933 MHz w/dual 10/100 Ethernet, Ultra 160 SCSI and SVGA

##### IBC 2801-D933

Dual Pentium III-M, 933 MHz w/dual 10/100 Ethernet, Ultra 160 SCSI and SVGA

##### Memory Options

<b>DSDM-128MB</b>	128MB DDR SDRAM
<b>DSDM-256MB</b>	256MB DDR SDRAM
<b>DSDM-512MB</b>	512MB DDR SDRAM
<b>DSDM-1GB</b>	1 GB DDR SDRAM
<b>DSDM-2GB</b>	Call

##### IBC 2703-RIO

Rear I/O transition module for 280X with 1.8" hard drive socket

##### Hard Drive Options

<b>HDD-5GB</b>	5GB 1.8" IDE HDD
<b>HDD-10GB</b>	10GB 1.8" IDE HDD
<b>HDD-20GB</b>	20GB 1.8" IDE HDD

**IBC 16010** - Storage Mezzanine Board for 280x with 1.8" hard drive socket and CompactFlash socket

##### Hard Drive Options

<b>HDD-5GB</b>	5GB 1.8" IDE HDD
<b>HDD-10GB</b>	10GB 1.8" IDE HDD
<b>HDD-20GB</b>	20GB 1.8" IDE HDD

##### CompactFlash Options

<b>CF-32MB</b>	32MB CompactFlash
<b>CF-64MB</b>	64MB CompactFlash
<b>CF-128MB</b>	128MB CompactFlash
<b>CF-256MB</b>	256MB CompactFlash
<b>MD-1GB</b>	1GB Microdrive

#### Specifications

##### Microprocessor

- Single or dual Low Power Pentium III Processors at up to 933 MHz
- Supports possible future Intel® speed upgrades

##### Cache

- 512 Kbytes Integrated Full speed L2 cache

##### Chipset

- Micron® Copperhead™/Coppertail™

##### Dynamic RAM

- Up to 2 GB of Double Data Rate (DDR) synchronous DRAM at 266 MHz

##### 32-bit PCI Mezzanine Card (PMC) Expansion

##### CompactPCI Bus Master

- 32/64 bit 33/66 MHz CompactPCI Bus interface
- Stand-alone mode to operate in Peripheral slot

##### Optional Storage Mezzanine Board

- 1.8" IDE HDD up to 20GB
- CompactFlash up to 256MB or 1GB Microdrive

##### SCSI Interface

- Ultra 160 SCSI, LSI 53C1000
- Supports future upgrades to Ultra 320

##### BIOS

- Award BIOS
- Customized BIOS available

##### Watchdog Timer

- Software controlled with reset capability

##### Ethernet Interfaces

- Dual 10/100BaseTx Ethernet, Intel 82559ER
- PICMG® 2.16 compatible pin-outs w/ 2703 RIO

#### PICMG 2.16 Compliant

##### Video Interface

- 69030 PCI Video with 4MB Memory
- 1280 x 1024 x True Color non-interlaced

##### Enhanced IDE (Dual)

- Dual IDE Interface up to 4 drives
- ATA 100 with synchronous transfers up to 100MB/s

##### System Monitoring

- On-board monitoring of voltages, temperatures
- Optional PICMG 2.9 Compliant BMC/PM
- Optional SNMP Agent Software Available

##### USB

- One PC compatible USB port
- Additional USB port on 2703 RIO rear panel

##### Standard I/O

- Floppy drive interface, up to 2 drives
- Dual 16C550 Serial Ports
- Bi-directional Parallel Port with EPP and ECP
- PS/2 Mouse Port
- PS/2 Keyboard Interface

##### Mechanicals

- 1-Slot (4HP) x 6U **CompactPCI®** Compliant
- **CompactPCI®** Compliant 2703 Rear I/O Board

##### Operating Environment

- Temperature: 0° - +50° C
- Storage: -40° - +85° C

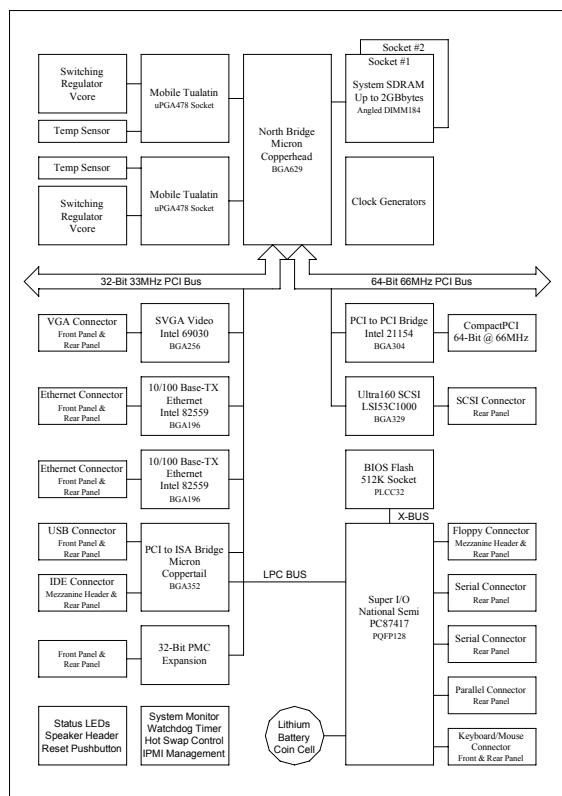
##### Power Requirements (Typical)

- 3.5A (single CPU) or 5A (dual CPU) at +5.0 volts
- 2A (single CPU) or 3A (dual CPU) at +3.3 Volts
- 24Watts (single CPU) or 34 Watts (dual CPU)

# IBC 2801

## Dual Low Power Pentium® III System Master CPU Board

The IBC 2801 is fully CPSB PICMG 2.16 compatible to support Ethernet switched fabric backplane architectures. With the additional compatibility of PICMG 2.1 full hot-swap and PICMG 2.9 full IPMI system management, the IBC 2801 is a powerful, scalable, open architecture building block in high-reliability and high-availability CompactPCI-based server blade systems from I-Bus. The IBC 2801 supports Dual Low Power Embedded Intel Pentium III processors, operating at up to 933MHz. Program and data storage needs are met with support for up to 2 Gbytes of DDR SDRAM as well as 256+ Mbytes of CompactFlash or a 1 Gbyte IBM Microdrive, and a 1.8" IDE hard drive up to 20GB on board. Additional features include Ultra 160 SCSI with rear I/O, dual 10/100BaseTX Ethernet, 32-bit PMC expansion and on-board AGP Video. Also supported is the full set of standard PC peripherals including Ultra ATA/100, 1.44 Mbyte floppy, USB, RS-232 serial ports, parallel port, mouse and keyboard.



Peripheral Map

Peripheral	Front Panel	Rear Panel	Comment
SVGA Video	√	√	Jumper selectable
Ethernet 0	√	√	Jumper selectable
Ethernet 1	√	√	Jumper selectable
PMC	√		
Ultra 160 SCSI		√	On rear I/O board as internal 68-pin connector
Ultra IDE 0		√	Also available on-board via 50-pin header
Ultra IDE 1		√	On rear I/O board as internal header connector
Floppy		√	Also available on-board via 50-pin header
USB 0	√		
USB 1		√	
Serial Port 0		√	
Serial Port 1		√	
Printer Port		√	On rear I/O board as internal header connector
Mouse	√	√	Shared with keyboard on single PS/2 connector
Keyboard	√	√	Shared with mouse on single PS/2 connector

### For Further Information



#### Worldwide Headquarters

I-Bus Corporation  
 3350 Scott Blvd, Building 54  
 Santa Clara, CA 95054  
 United States  
 Phone : +1 (408) 450-7880  
 Fax : +1 (408) 450-7881  
**Toll Free: 877-777-IBUS**  
 Email: contact.us@ibus.com

#### European Headquarters

I-Bus UK Ltd  
 Unit 6, Chichester Business Park  
 City Fields Way, Tangmere  
 West Sussex, PO20 2LB, UK  
 Tel: +44 (0) 1243 756300  
 Fax: +44 (0) 1243 756301  
 Email: contact.uk@ibus.com

#### France, Italy

I-Bus France  
 B.P 45 Valbonne  
 06901 Sophia Antipolis CEDEX  
 France  
 Tel: +33 (0) 493 004 360  
 Fax: +33 (0) 493 004 369  
 Email: contact.fr@ibus.com